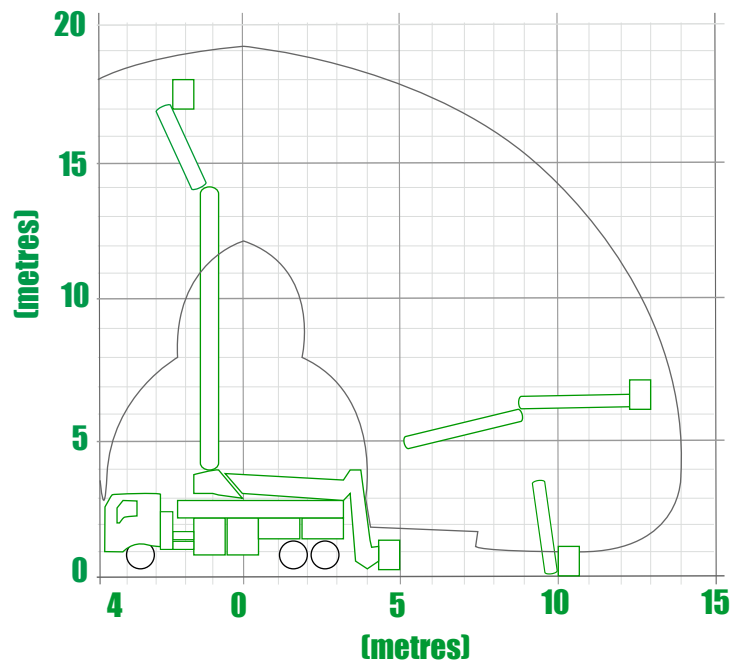


18 Metre Industrial Redmond Gary Elevated Work Platform

Unit Number: Unit 17, 18, 19 & 20

Specs

Max Working Height	19 m
Working Radius at Max Height	0 m
Safe Working Load	325 kg
Max Working Radius	14 m
Max Stabiliser Spread	3.50 m
Travelling Height	3.70 m
Travelling Width	2.50 m
Travelling Length	6.50 m
Overall Weight	18,000 kg
Basket Rotation	90°



Additional Equipment

- Water Tanks
- Pressure Cleaner 3600psi

www.ewphire.net.au

EWP Hire Pty Ltd

P: 0488 666 063
E: admin@ewphire.net.au

ABN: 61 162 101 699

P: PO Box 239 West Burleigh QLD 4219
A: 3 Rudman Parade, Burleigh Heads QLD 4220